

**Fyfield Road, Brixton, SW9**

**£275,000**

0 bedroom flat for sale

## Property Details

A beautifully presented, larger than average studio flat located a short walk from Brixton Village. The property is within an attractive converted Victorian building, perfectly located on Fyfield Road. The property has been thoughtfully designed in an open-plan layout, with plenty of room in which to relax, whilst the sleek, modern kitchen is tucked away to create distinguished areas in which to dine and entertain. The living space flows seamlessly through to the sleeping area with lovely French doors that open up onto a large shared garden. Central Brixton is a seven-minute walk.

## Features

- Studio apartment
- Period conversion
- 450 square feet of internal living space
- Direct access to a large shared garden
- Close to transport links
- Close to the park
- Chain free

Council tax band C    EPC rating (null)



Fyfield Road, Brixton, SW9

Fyfield Street

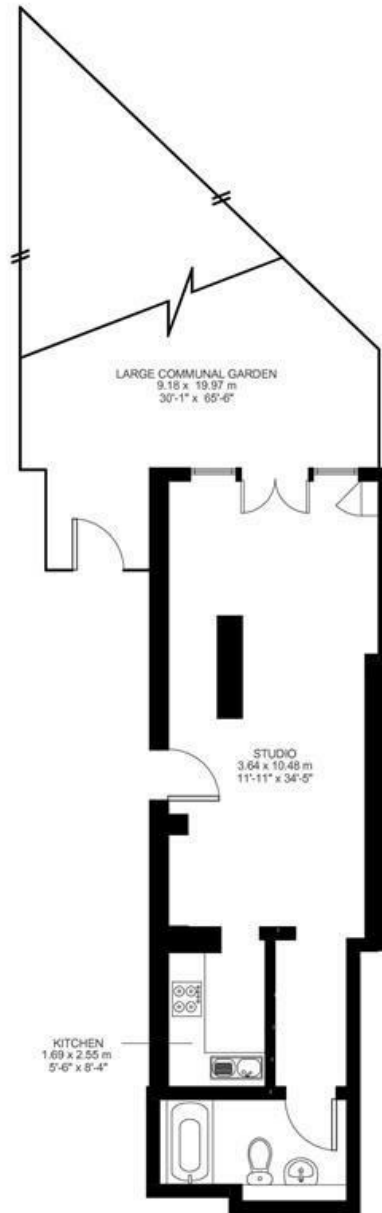
**K**

Studio flat

Approx internal area:

**450 sqft 42 sqm**

While we do try our very best, floor plans are produced as a guide only and we take no responsibility for the precise accuracy with which any property is represented



Lower Ground Floor



Fyfield Road, Brixton, SW9

